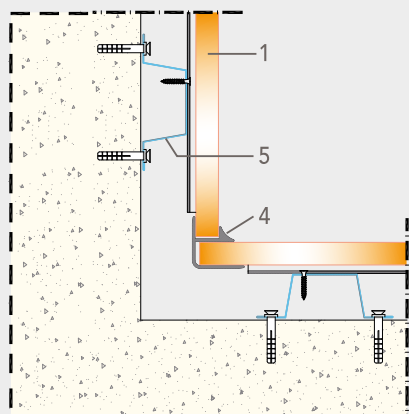
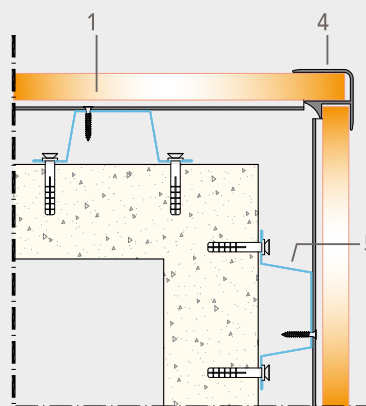


## SCHEMI DI MONTAGGIO

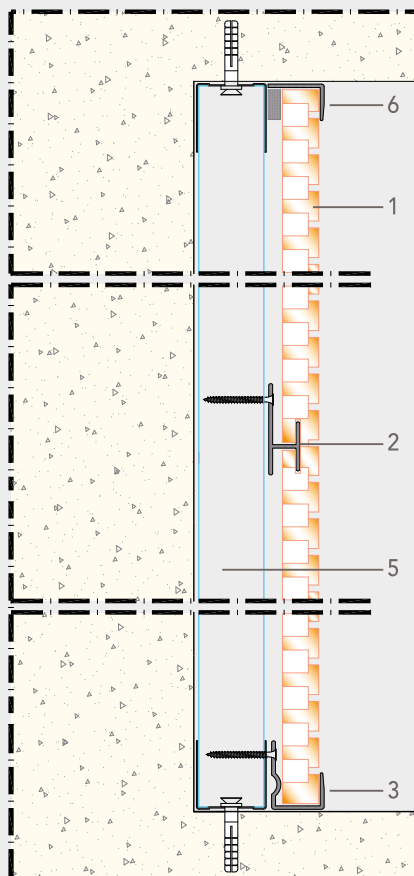


Angolo interno



Angolo esterno

- 1] Pannello Evolution Panel
- 2] Profilo di sostegno art. PE 20805
- 3] Profilo di finitura art. PE 20806
- 4] Angolo interno/esterno art. PE 20807
- 5] Sottostruttura
- 6] Profilo di finitura superiore



Sezione verticale